

# Reuben College Termcard

## Trinity Term 2026

This is your handbook for events organised by the staff and Fellows of Reuben College. A number of additional theme events may be arranged throughout the term, and will be advertised in the weekly College newsletter. The graduate community also organises social events which are advertised separately. Note:

- President's Collections are also open for all Reuben students in Trinity term. You can book directly on the [President's Collections page on the student hub](#).
- Reuben members are able to bring guests to most evening events: there will be a charge for guest meals.
- For **Reuben Explores** you are asked to register via Microsoft Forms using the links below by 12 noon on the Friday prior to each event. You are welcome to invite non-Reuben friends - we just ask that you register them in advance. This event is free of charge.
- For **Tuesday Talks/Dining with Dinosaurs (DwD)**, you'll need to book (and pay for guests) via University Online Stores by 9:00 on the Friday prior to each event. See [Terms & Conditions for Tuesday Talks here](#). This event is free for Reuben members and £18/£20 for guests (students/non-students & alumni).
- For **Formal Halls** (£25) and **Cultural Dinners** (£15) on Thursdays, you will need to book and pay via University Online Stores by 9:00 on the Friday prior to each event. See [Terms & Conditions for Thursday Night Dinners here](#).

**Events may be subject to changes; these will be communicated in the College's weekly newsletter wherever possible.**

### IN THE DINING HALL

#### WEEKLY LUNCHES\*

Lunch is normally served Monday - Friday between 12:00 - 13:00 for Reuben members (and guests) only. Lunch is open to all University members from 13:00 - 14:00.

#### MONDAY & WEDNESDAY DINNERS\*

In term time, dinner is also available on Monday & Wednesday evenings from 17:30 - 18:45 for Reuben members and guests.

**\*You do not need to book these in advance.**

# WEEK 1

26 APRIL - 2 MAY

## Tuesday Talks/DwD:

### AI Has Transformed Weather Forecasting – Will It Do the Same for Climate Prediction?

**Tuesday 28 April**

18:20 - 21:00, Dining Hall

The rapid transformation of weather forecasting by AI has taken even experts by surprise. Every weather forecasting centre in the world is transitioning to AI based forecasts – or trying to catch up with the ones who already do. But will it do the same for climate prediction? And if it did, how would we know it's right?

In this lecture, Reuben Fellow, [Prof Philip Stier](#), will explore the exciting opportunities and challenges that come with the transformation of climate science by AI, focusing on clouds, which remain one of the biggest uncertainties in climate predictions.

**[Book here](#)**

# WEEK 2

3-9 MAY

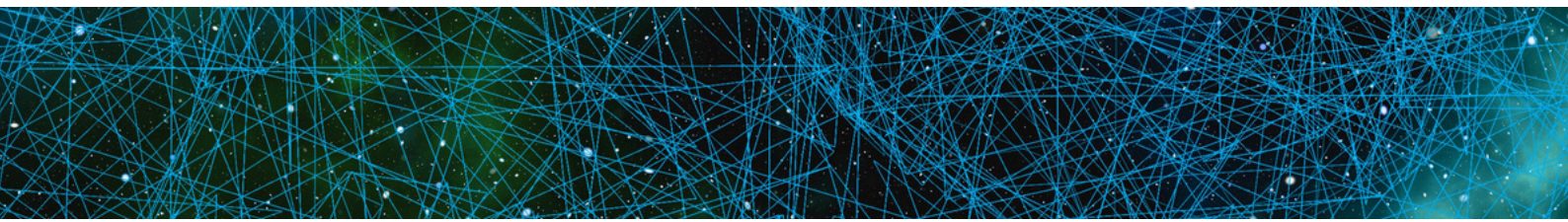
## Tuesday Talks/DwD: Student Takeover

**Tuesday 5 May**

18:20 - 21:00, Dining Hall

Join us for presentations from our own Reuben students on their varied research projects. Details on the topics and presenters to follow.

**[Book here](#)**



# WEEK 3

10-16 MAY

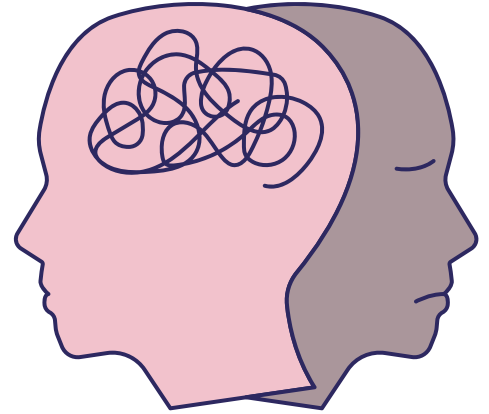
## Tuesday Talks/DwD: Can Virtual Reality Help Treat Psychosis?

**Tuesday 12 May**

18:20 - 21:00, Dining Hall

Psychosis can profoundly affect how people think, feel, and experience the world. Often beginning in adolescence, it can have lifelong impacts. Better treatments are needed. Working together with people with lived experience, new psychological approaches combine cognitive theory with digital tools to help people feel safer, happier, and re-engage with everyday life.

Dr Felicity Waite (Reuben Fellow) will explore recent innovations in psychological treatments for psychosis, including how virtual reality is opening up new possibilities for treatment.



**[Book here](#)**

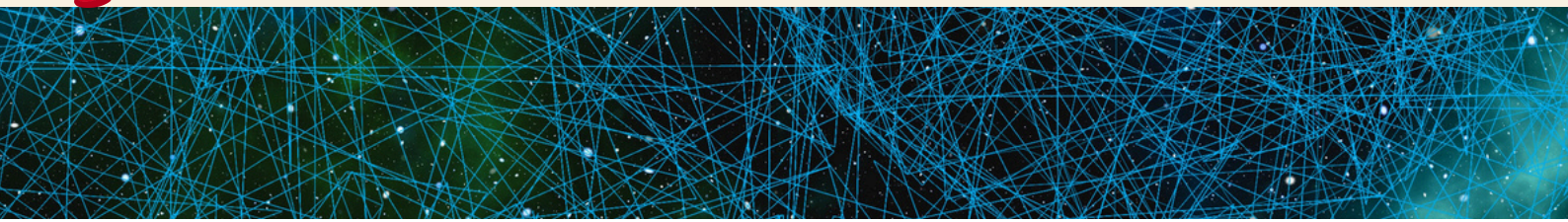
## Cultural Dinner: Latin America

**Thursday 14 May**

18:45 - 21:00, Dining Hall

A celebration of the vibrancy, resilience, and rich heritage of Latin American communities through food, stories, and shared celebration, with Cinco de Mayo as inspiration for the evening.

**[Book here](#)**



# WEEK 4

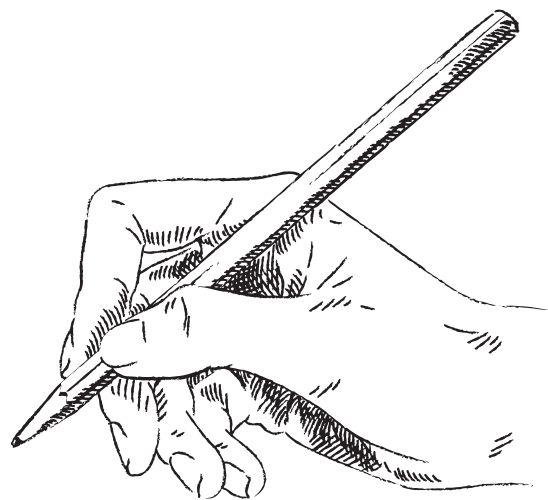
17-23 MAY

## Reuben Explores: Sketch Your Subject

**Monday 18 May**

17:30 - 18:30, College Bar

Are you looking for new ways to present your research? Have you never tried art before but fancy giving it a try? If so, come along to this workshop in collaboration with the Public Engagement with Research, Culture & Heritage theme and the Reuben Art Society (led by Sophie Brixton). We will be exploring and brainstorming designs which express your research interests!



Materials will be provided and the session will be relaxed and informal, so do come and try it out.

**[Book here](#)**

---

## Tuesday Talks/DwD: Responsible AI for Human Flourishing

**Tuesday 19 May**

18:20 - 21:00, Dining Hall

What does it mean to have 'Responsible AI'? And what happens when AI intersects with a marginalised identity like disability? Dr Denis Newman-Griffis will unpack the shifting meanings and everyday practices of Responsible AI through the relationships between AI, data, and disability.

This talk will explore how we develop and test AI systems, the insights that critical analysis reveals about AI and disability justice, and how social research can shape responsible use of AI in disability policy.

Dr Newman-Griffis will share lessons and emerging impacts from international research and policy work in this rapidly changing space.

**[Book here](#)**

# WEEK 4 (CONT'D)

17-23 MAY

## President's Interdisciplinary Lunch

**Wednesday 20 May**

12:00 - 13:00, Abbot's Kitchen (Meet in Dining Hall at 11:50)

Facilitating our commitment to interdisciplinary discussion, the College President is hosting an informal lunch, where he invites Reuben students and Fellows from all themes to join him for a lunch, paid for by the College\*. You will collect your meal in the Dining Hall, then take your tray into the Abbot's Kitchen. No preparation required.

\*Places are limited to 15; register as soon as possible. You may withdraw up to one week before; after this, you will be charged for lunch.

**Please book by emailing [academic.support@reuben.ox.ac.uk](mailto:academic.support@reuben.ox.ac.uk).**

## Formal Hall

**Thursday 21 May**

18:45 - 21:00, Dining Hall

An Oxford staple, Formal Hall offers the opportunity to dress up and dine with friends and colleagues in our Grade II listed hall.

Relax and enjoy a three-course dinner prepared by our award-winning kitchen, with a focus on seasonal ingredients.

Members can invite up to a max of five paying guests.

**[Book here](#)**



# WEEK 5

## 24-30 MAY

### Tuesday Talks/DwD: Extinction of the Sick-Care Dinosaurs?



**Tuesday 26 May**

18:20 - 21:00, Dining Hall

Pharmaceuticals, medical technology, and health services are industries dominated by 'dinosaurs'. Collectively, the sick-care body is too big for the brain to control.

As a society, we invest ever more money in diagnose-and-treat rather than predict-and-prevent. Could the exponential rise of artificial intelligence be the asteroid impact that fundamentally alters the landscape?

Reuben Visiting Fellow, [Dr George Savage](#), explores.

**[Book here](#)**



## Formal Hall

**Thursday 28 May**

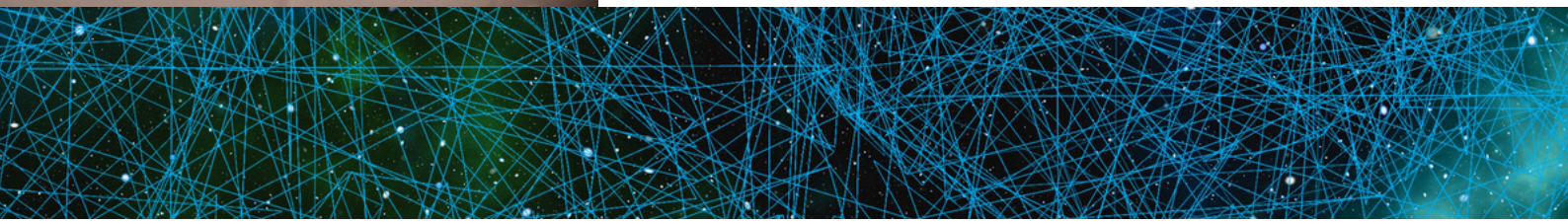
18:45 - 21:00, Dining Hall

An Oxford staple, Formal Hall offers the opportunity to dress up and dine with friends and colleagues in our Grade II listed hall.

Relax and enjoy a three-course dinner prepared by our award-winning kitchen, with a focus on seasonal ingredients.

Members can invite up to a max of five paying guests.

**[Book here](#)**



# WEEK 6

31 MAY - 6 JUNE

## Reuben Explores: Uncomfortable Oxford

### BOOKING REQUIRED

#### Monday 1 June

Meet outside the Lodge by 17:10

Uncomfortable Oxford runs unique Oxford tours highlighting its diverse past. Their guides connect Oxford's architecture to stories often omitted from mainstream narratives; tours spotlight unheard voices and marginalised perspectives, covering colonial entanglements, the legacy of empire, and more.

You will walk through the historic city and engage with the history that has shaped the beauty and grandeur of the Oxford landscape.

[Book here](#)

## Tuesday Talks/DwD: The Science of Resilient Aging: AI, Cancer, and Immune Health

#### Tuesday 2 June

18:20 - 21:00, Dining Hall

The science of aging is being transformed, and as boundaries between disease disciplines begin to blur, researchers are connecting cancer, dementia, and immune health through shared biology. From studies of extreme healthy agers at single-cell resolution to cohort analyses of disease risk and long-term resilience, these approaches are offering new insight into why some people remain healthier for longer.

This talk, by [Dr Philip Awadalla](#) (Reuben Fellow) explores how this emerging science could reshape early detection, prevention, and healthier aging.

[Book here](#)

## Formal Hall

#### Thursday 4 June

18:45 - 21:00, Dining Hall

Dress up and dine with friends and colleagues in our Grade II listed hall.

Relax and enjoy a three-course dinner prepared by our award-winning kitchen, with a focus on seasonal ingredients.

Members can invite up to a max of five paying guests.

[Book here](#)



# WEEK 7

7-13 JUNE

## Tuesday Talks/DwD: Environmental Health: What a Changing Environment Means for Your Mind

### Tuesday 9 June

18:20 - 21:00, Dining Hall

Researchers are learning what many cultures have known for a long time: we are deeply interconnected to and influenced by our environments.



In this session, Dr Emma Lawrance (Reuben Fellow) will share her research, including conversations with thousands of people globally, on the interconnections between our climate and mental wellbeing.

Come and explore what climate psychology is learning about the ways our minds can shape the world, and consider how to strengthen our own wellbeing in a changing world.

**[Book here](#)**

## Ethics in Film Presents: GATTACA

### Thursday 11 June

17:30, Ultimate Picture Palace

A one-off screening, followed by a panel discussion and Q&A, organised by Ethics In Film at the Ethox Centre. This event is supported by Reuben College, the Oxford University Department of Physiology, Anatomy and Genetics and TORCH Medical Humanities, in collaboration with the Ultimate Picture Palace.

Panellists include Prof Angeliki Kerasidou (Reuben Fellow), Dr Andrew Moeller, Dr Kiri Bloom Walden, and Dr Hugo Fernandes.

The Values & Society theme are offering a limited number of free tickets to Reuben students on a first-come, first-served basis.

**[Book here](#)**

# WEEK 7 (CONT'D)

7-13 JUNE

## Formal Hall

**Thursday 11 June**

18:45 - 21:00, Dining Hall

An Oxford staple, Formal Hall offers the opportunity to dress up and dine with friends and colleagues in our Grade II listed hall. Relax and enjoy a three-course dinner prepared by our award-winning kitchen, with a focus on seasonal ingredients.

Members can invite up to a max of five paying guests.

**[Book here](#)**



# WEEK 8

14-20 JUNE

## Tuesday Talks /DwD: TBC

**Tuesday 16 June**

18:20 - 21:00, Dining Hall

This Tuesday Talks/DwD evening is still being finalised.

Keep an eye out in the College newsletter this term for updates.

**[Book here](#)**

## Cultural Dinner: Summer Solstice

**Thursday 18 June**

18:45 - 21:00, Dining Hall

As the Summer Solstice arrives, we gather to celebrate light, abundance, and new hope.

Join us for an evening inspired by nature's energy, with seasonal flavours, bright company, and a joyful welcome to the renewal and promise of the summer ahead through shared activities.

Colourful and vibrant outfits will be much appreciated.

**[Book here](#)**



# WEEK 8 (CONT'D)

14-20 JUNE

## Student Led Event: Reuben College Ball

**Saturday 20 June**

19:00, Reuben College

The theme for this year's Reuben College Ball is "Once Upon a Time...". Prepare for an evening of fables and celebration: think enchanted forests, star-crossed lovers and tales best told by moonlight.

The night will feature multiple food options, an open bar, live music all night long, entertainment, and much more to be revealed...

**[Book here](#)**

## BEYOND TERM

### AI-Ethics Schmidt Colloquium

**Thursday 25 June**

11:00 - 16:30, Lecture Theatre

You are warmly invited to this colloquium, jointly organised by Reuben College and the Nuffield Department of Primary Care Health Sciences. It is supported by two Reuben themes (Artificial Intelligence & Machine Learning and Values & Society), as well as the Schmidt AI Programme.

The aim is to bring together AI and ethics researchers to kindle research collaborations. The day consists of a series of talks by the Schmidt Fellows and by researchers under the Values & Society theme, as well as lunch and breaks to foster conversations. Afterwards, people often venture to a nearby pub to continue their conversations.

This event is free (including lunch) for Reuben members and the ADH-MSc students from the Nuffield Department of Primary Care Health Sciences.

**[Book here](#)**



# Diagnostics for Low and Middle-Income Countries Conference



## DIAGNOSTICS FOR LMICs CONFERENCE 2026

**Tuesday 30 June - Wednesday 1 July**

9:00 - 17:30, Dining Hall

The Diagnostics for Low and Middle-Income Countries (Dx4LMICs) Conference at Reuben College is now in its fourth year.

Our Conference brings researchers who are passionate about developing and deploying diagnostic tools to improve the healthcare of underserved populations to hear from, and interact with, experts who share this passion.

This year we are focusing on Diagnostics for a Changing World and will examine themes ranging from climate-resilient diagnostics and data sovereignty to computational pathology.

**[See webpage for details & registration](#)**



# FURTHER BOOKING INFO

## **Bookings**

Tickets and guest tickets can only be booked by Reuben members using a Reuben email address. All guests must attend the event with a Reuben member; anyone found to have booked guest tickets without being present themselves will have these places cancelled.

A reminder of the Booking Terms and Conditions can be found below:

[Tuesday Talks/DwD](#)

[Thursday Night Dinners](#)

## **Dietary Requirements & Allergies**

If you have any dietary requirements and/or allergies, please ensure these are noted on your booking for every event you book onto. They will not be transferred across between bookings.

## **Pronouns**

You may have noticed that we are asking, when booking onto events, whether you would like to include your pronouns on your place cards. **But why?**

Pronouns are words we use in everyday language to refer to ourselves or others. They can be an important way to express your gender identity. 'I', 'me', 'she/her', 'he/him' and 'they/them' are some examples of pronouns. Some trans and gender non-conforming people may use 'they', 'them' and 'theirs' as personal pronouns. 'They' is considered a gender-neutral pronoun, compared to pronouns like 'he/him' or 'she/her' which are generally perceived as gendered terms.

Pronouns can be used to role model trans allyship, allowing others to see that inclusion is a key component of our College culture. For more information on why you might like to introduce yourself with your pronouns, and how to be inclusive of others doing so, please see here:

[A beginner's guide to pronouns and using pronouns in the workplace.](#)

## **College Hospitality**

This option is only to be used by those that have specific allowances from the College, and have been emailed to confirm that they can use this option. We reserve the right to cancel bookings that are not eligible.

Should you have any questions about the Termcard or upcoming events in Trinity Term, please email the events team at:

[events@reuben.ox.ac.uk](mailto:events@reuben.ox.ac.uk)



Reuben  
College  
UNIVERSITY OF OXFORD